

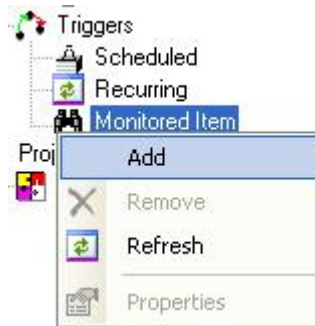
## Starting and Stopping logging based on a Tag's Value

This section will describe how to set your project to Start and Stop logging based on the value of a Tag.

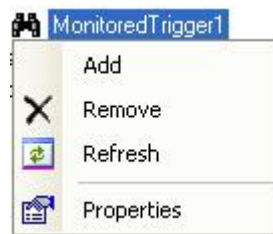
Our example assumes you have created at least one of each of the necessary components to log data. These components include; Data Collector, Data Storage, Data Presentation and a Project with at least one Group of items.

This will show you how to add and configure Monitored Item Triggers and add these triggers to your Project.

1. Right click on the Monitored Item icon in the tree view and select Add. This will create MonitoredTrigger1 in the tree view.



2. Right click on the MonitoredTrigger1 in the tree view and select Properties.



3. Give your trigger a meaningful name and description. Select the Data Collector where the item is located and click Browse. This will display the Item Browser.


**Monitored Item Trigger Properties**

Name:  ☒ Enabled

Description:

Advanced Settings

Data Collector:

Monitored Items:  

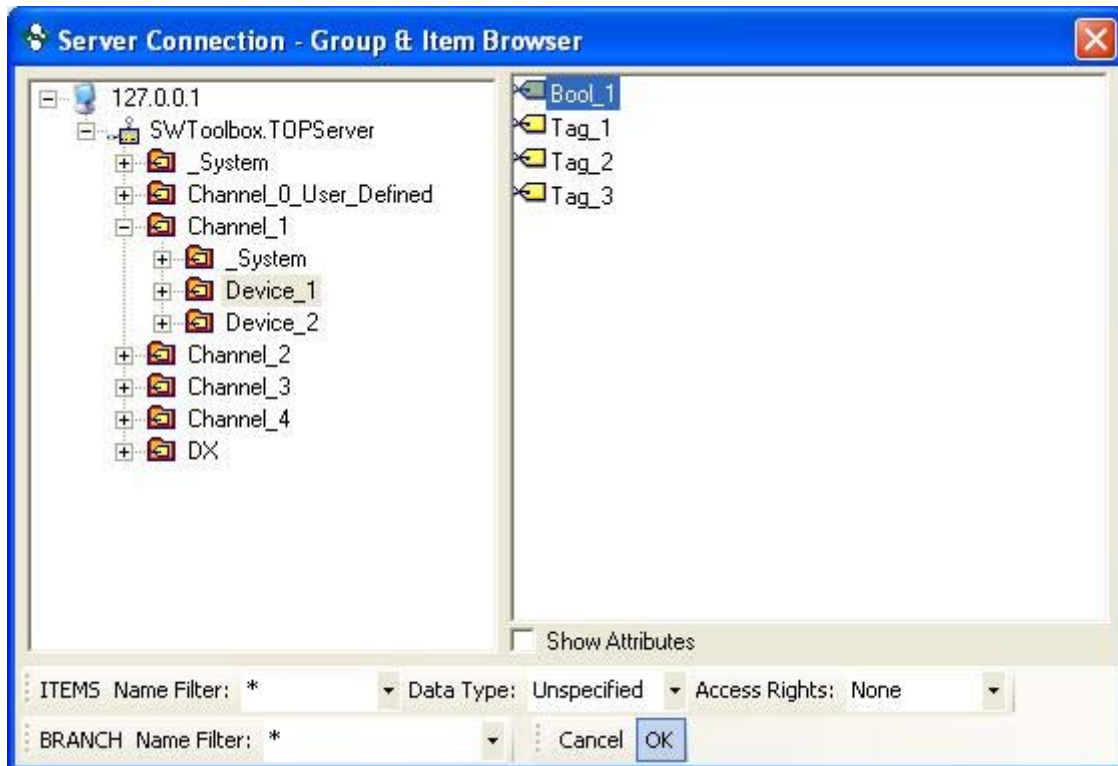
	Operator	Condition	Value
*	<input type="text"/>	<input type="text"/>	<input type="text"/>

Enter True or False for boolean items

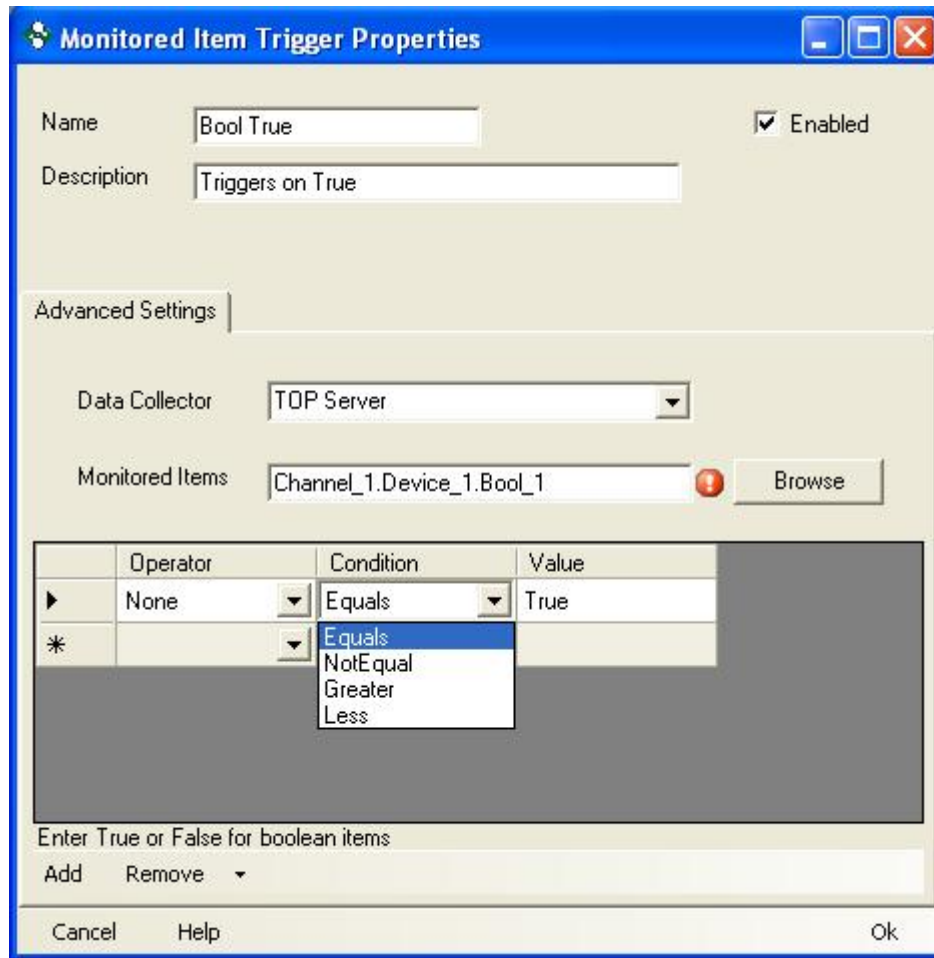
Add Remove

Cancel Help Ok

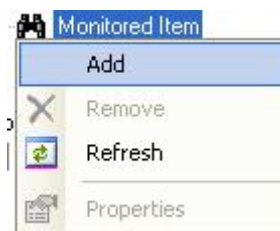
4. Browse for the item you are going to monitor, once the item is highlighted click OK. For this example we are going to monitor a Boolean item called Bool\_1.



5. Now you must specify a condition and a value. We want the trigger to fire when the value of Bool\_1 is equal to True. After specifying a condition and value click OK. We have just added and configured the first Monitored Item Trigger.



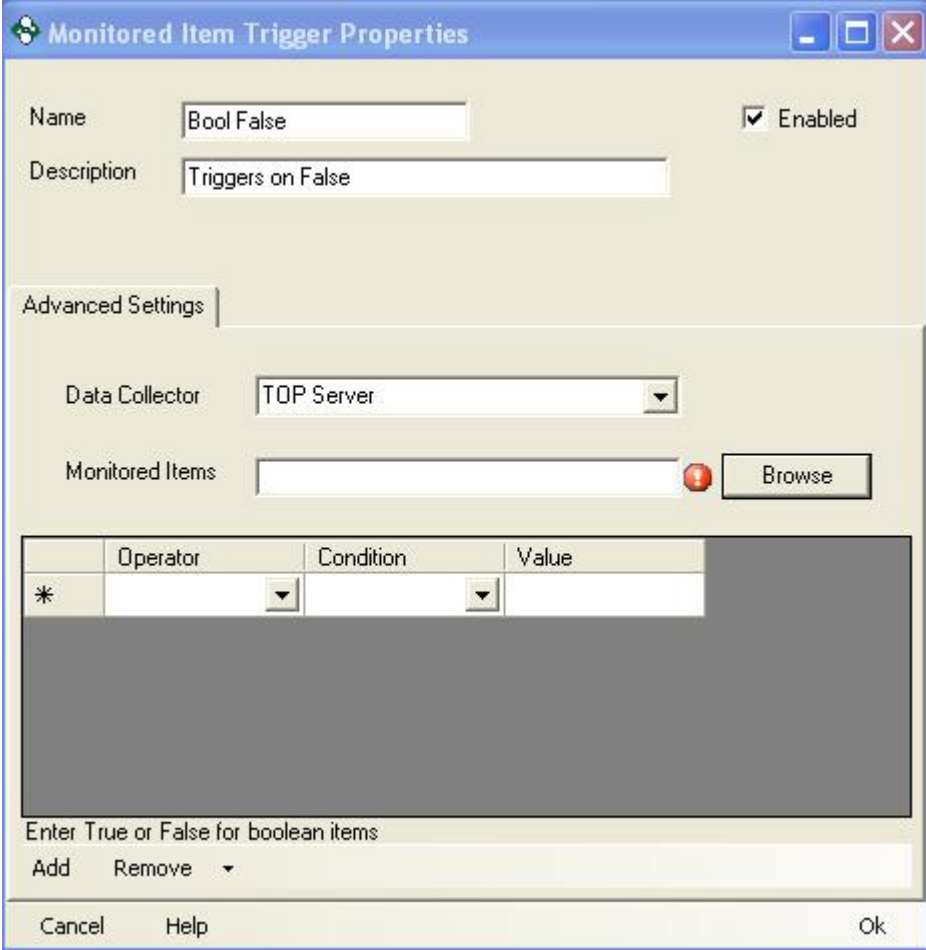
- Right click on the Monitored Item icon in the tree view and select Add. This will create MonitoredTrigger1 in the tree view.



- Right click on the MonitoredTrigger1 in the tree view and select Properties.



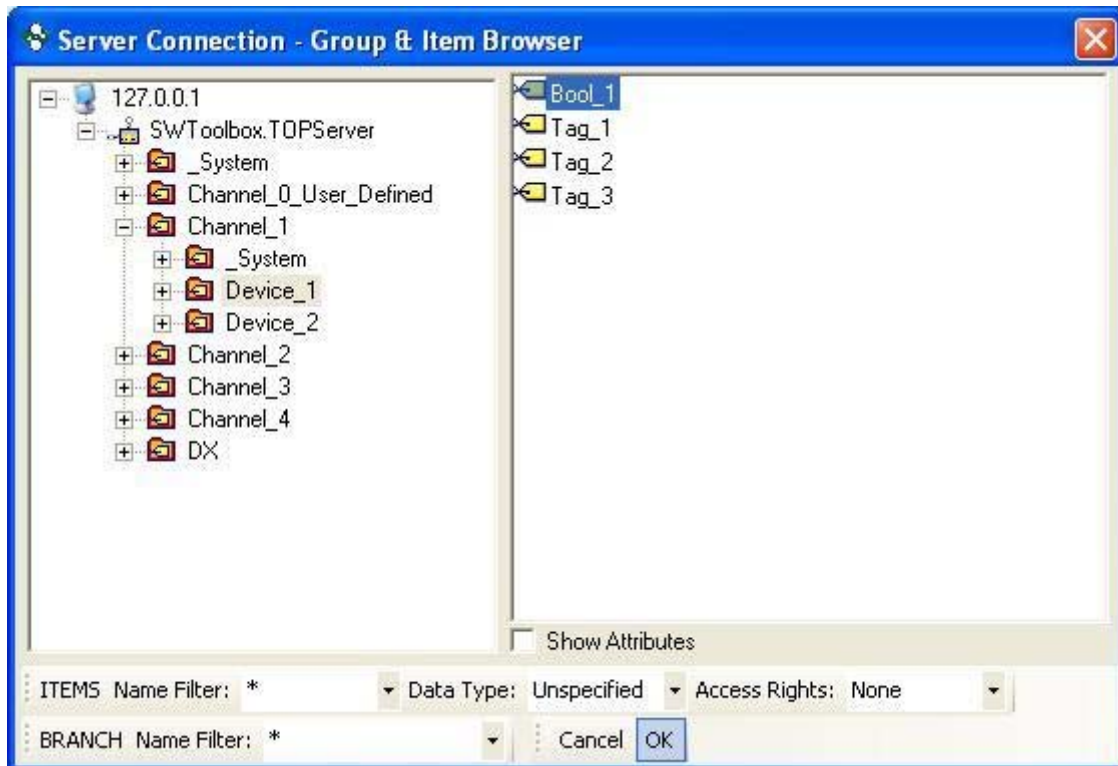
8. Give your trigger a meaningful name and description. Select the Data Collector where the item is located and click Browse. This will display the Item Browser.



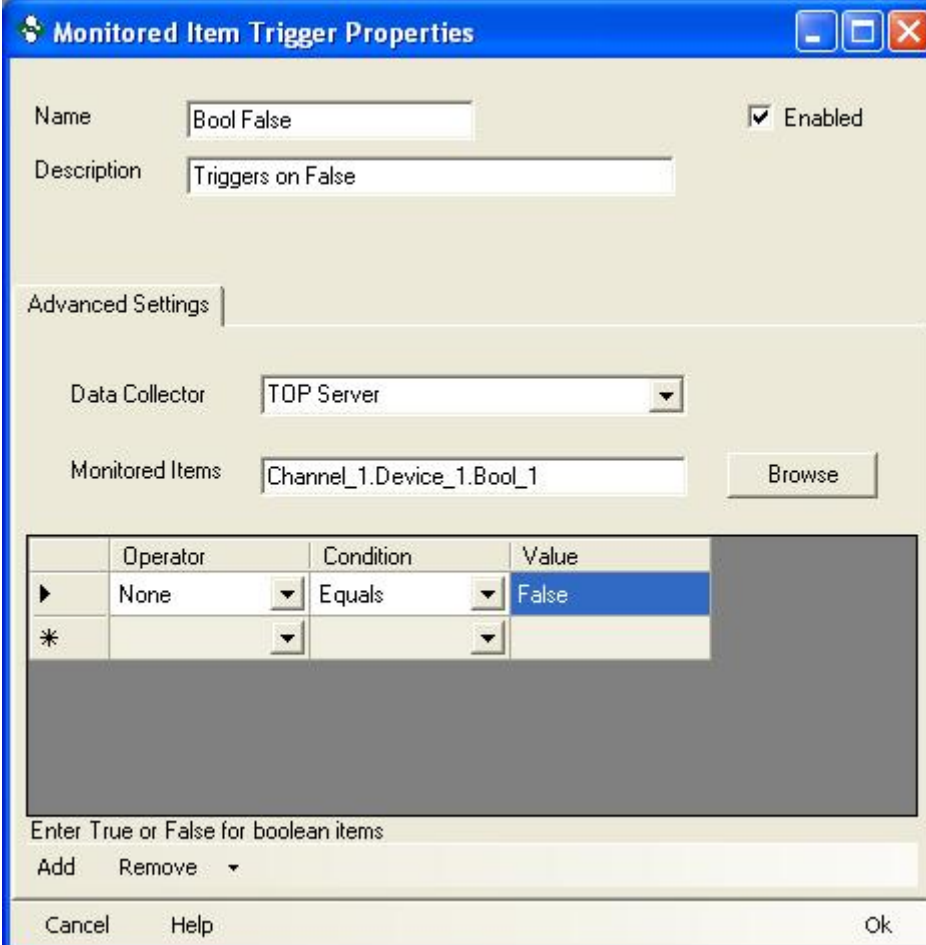
The image shows a Windows-style dialog box titled "Monitored Item Trigger Properties". It has a blue title bar with standard minimize, maximize, and close buttons. The main area is light beige. At the top, there are two text input fields: "Name" with the value "Bool False" and "Description" with the value "Triggers on False". To the right of the "Name" field is a checked checkbox labeled "Enabled". Below these fields is a tabbed interface with a single tab labeled "Advanced Settings". Under this tab, there is a "Data Collector" dropdown menu showing "TOP Server". Below that is a "Monitored Items" text box, which is empty, followed by a red circular icon with a white exclamation mark and a "Browse" button. Below the "Monitored Items" section is a table with four columns: an empty column, "Operator", "Condition", and "Value". The first row of the table contains an asterisk "\*" in the first column, a dropdown arrow in the "Operator" column, a dropdown arrow in the "Condition" column, and an empty "Value" field. Below the table, there is a text label "Enter True or False for boolean items" and a row with "Add" and "Remove" buttons, with a small dropdown arrow to the right of "Remove". At the bottom of the dialog are three buttons: "Cancel", "Help", and "Ok".

	Operator	Condition	Value
*			

9. Browse for the item you are going to monitor, once the item is highlighted click OK. We are going to choose the Bool\_1 item again.



**10.** Now you must specify a condition and a value. We want this trigger to fire when the value of Bool\_1 is equal to False. After specifying a condition and value click OK. We have just added and configured the second Monitored Item Trigger.



**Monitored Item Trigger Properties**

Name:  ☒ Enabled

Description:

Advanced Settings

Data Collector:

Monitored Items:

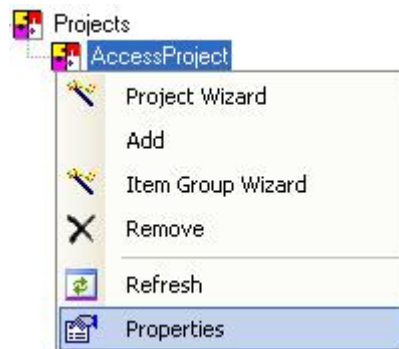
	Operator	Condition	Value
▶	None	Equals	False
*			

Enter True or False for boolean items

Add Remove

Cancel Help Ok

**11.** Now we must add the triggers to our project. Right click on your project in the tree view and select properties.



**12.** Click on the Triggers tab. Click Add and select the two triggers that were created above. Choose the effect for each of the triggers. The Bool True trigger will start logging and the Bool False trigger will stop logging.

**Project Properties - AccessProject**

Project Name:  ☒ Enabled

Description:

Data Collector:

Groups | Connection Control | Log To | Triggers

☒ Let triggers initiate logging

	Trigger	Enabled	Effect	Description
	Bool True	<input checked="" type="checkbox"/>	Start logging data	
▶	Bool False	<input checked="" type="checkbox"/>	Stop logging data	

Scheduled  
Recurring  
Monitored Items ▶

Add ▼ Remove ▼

Bool True  
Bool False

Properties

Cancel Help Ok

For this example we have enabled *Let triggers initiate logging*. With this option enabled once Start Logging is selected the project will only start logging data when the Bool True trigger fires. With this option disabled the project will start logging data as soon as Start Logging is selected.