

Logging from two Data Collectors to a single Data Storage Component

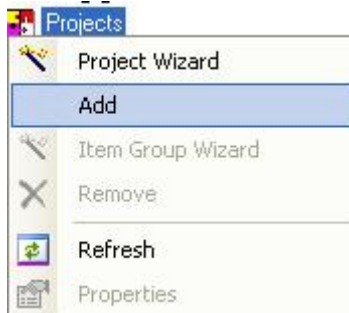
This example will show how to create a connection to two OPC Servers and log the data to a single text file.

Since each project uses a unique Data Collector it is necessary to create additional projects for each Data Collector that will be used. This example uses two different collectors so we will need to create two different projects.

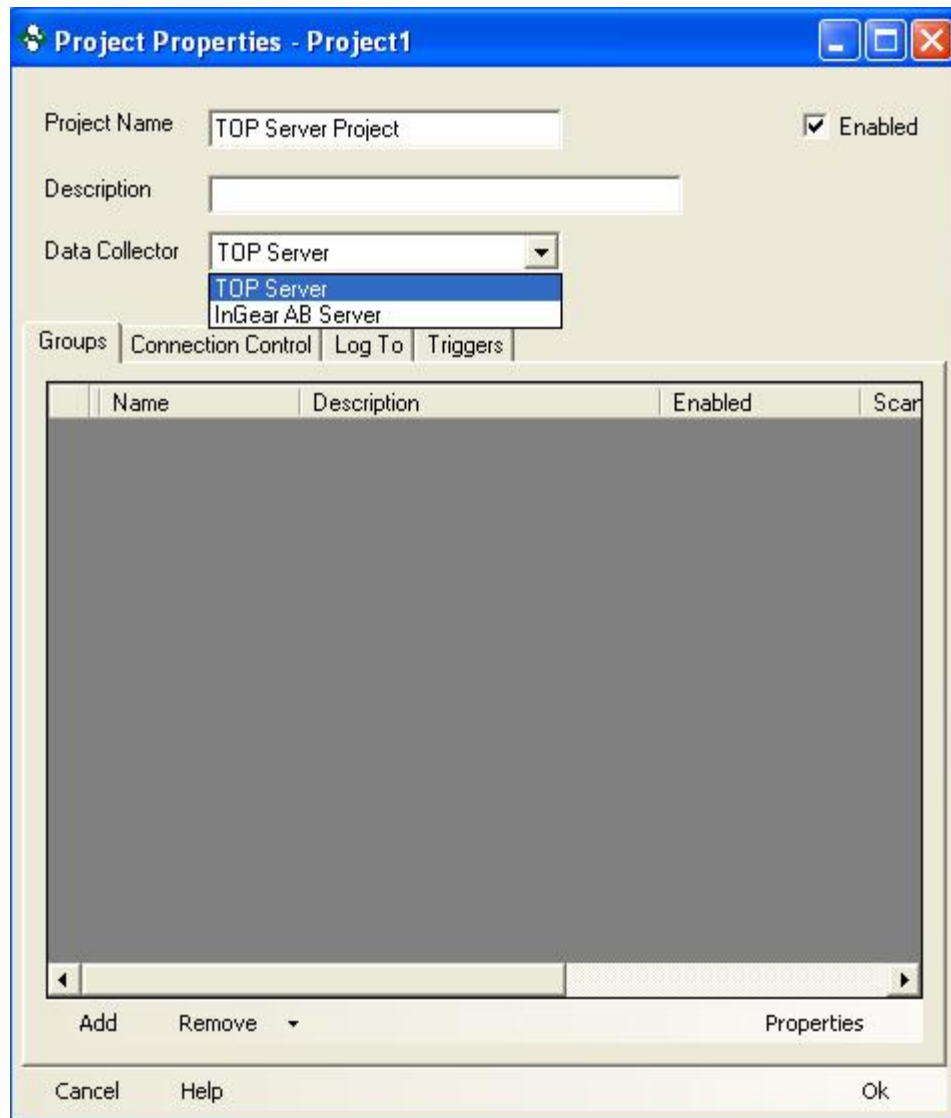
This example assumes the following.

- You have set up two Data Collectors. Each collecting data from a different server. These Collectors are named TOP Server and InGear AB Server.
- You have set up a Data Presentation.
- You have set up a single Data Storage Component and associated it with the Data Presentation above. The Data Storage Component is named TextFileLogger.

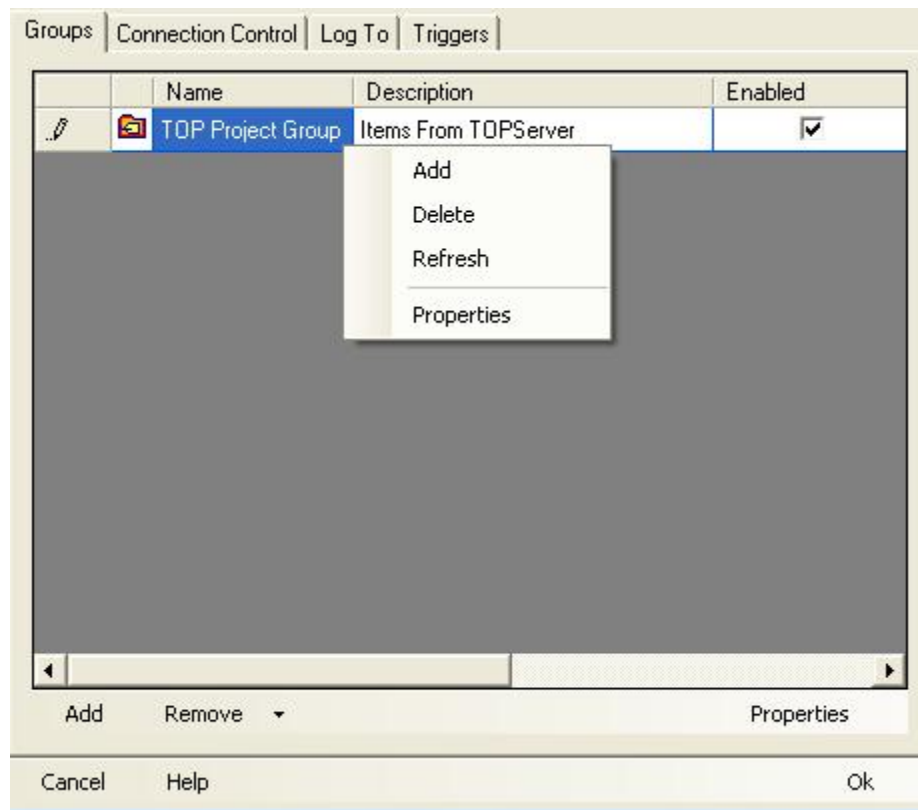
1. Right click on the Project icon in the tree view and select Add.



2. The project properties page will be displayed. Give your project a meaningful name and select the first Data Collector in the dropdown. For this example the Data Collector should be TOP Server.
3. Click the Add button in the bottom left. This will add an empty group to your project.



4. Right click on the group and select Properties.



5. Give your group a meaningful name. The items tab is where you can select the items that will be in the group.

Group Properties

Group Name: ☒ Enabled

Description:

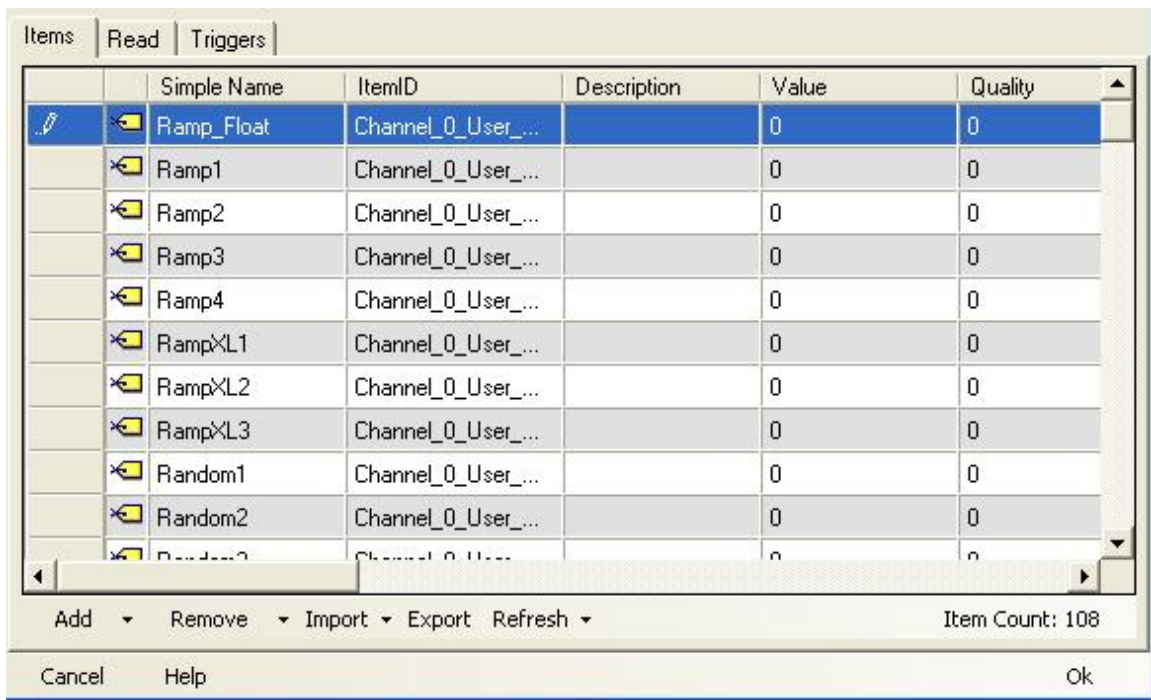
Items | Read | Triggers

Simple Name	ItemID	Description	Value	Quality
-------------	--------	-------------	-------	---------

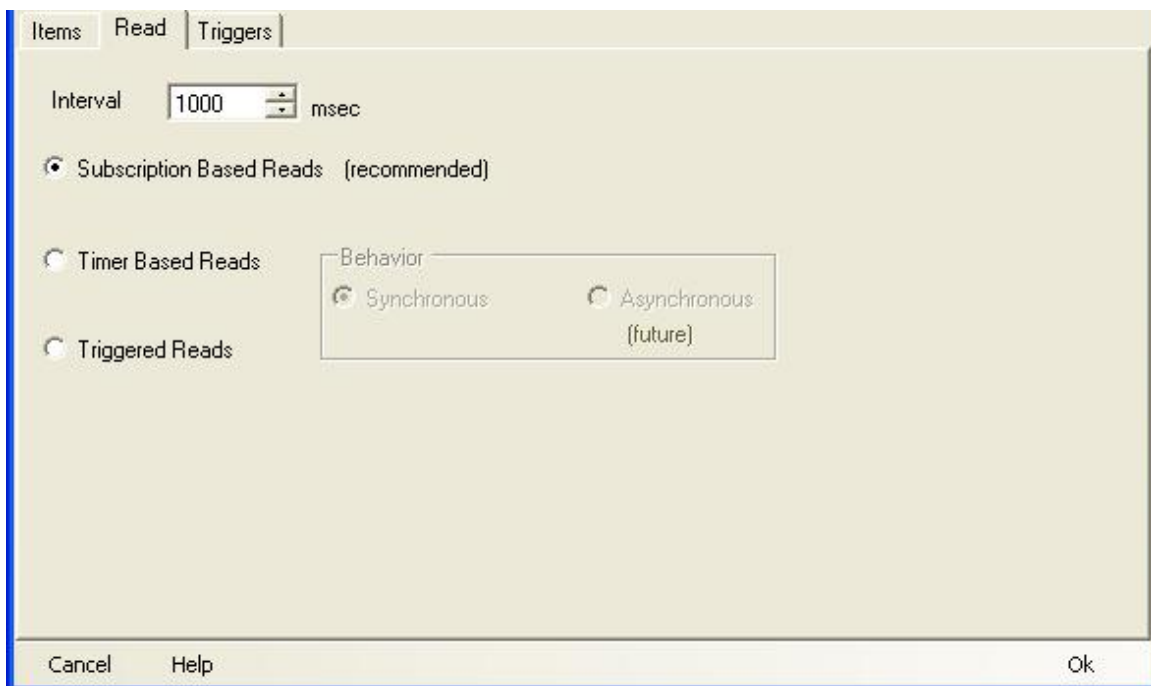
Add Remove Import Export Refresh Item Count: 0

Cancel Help Ok

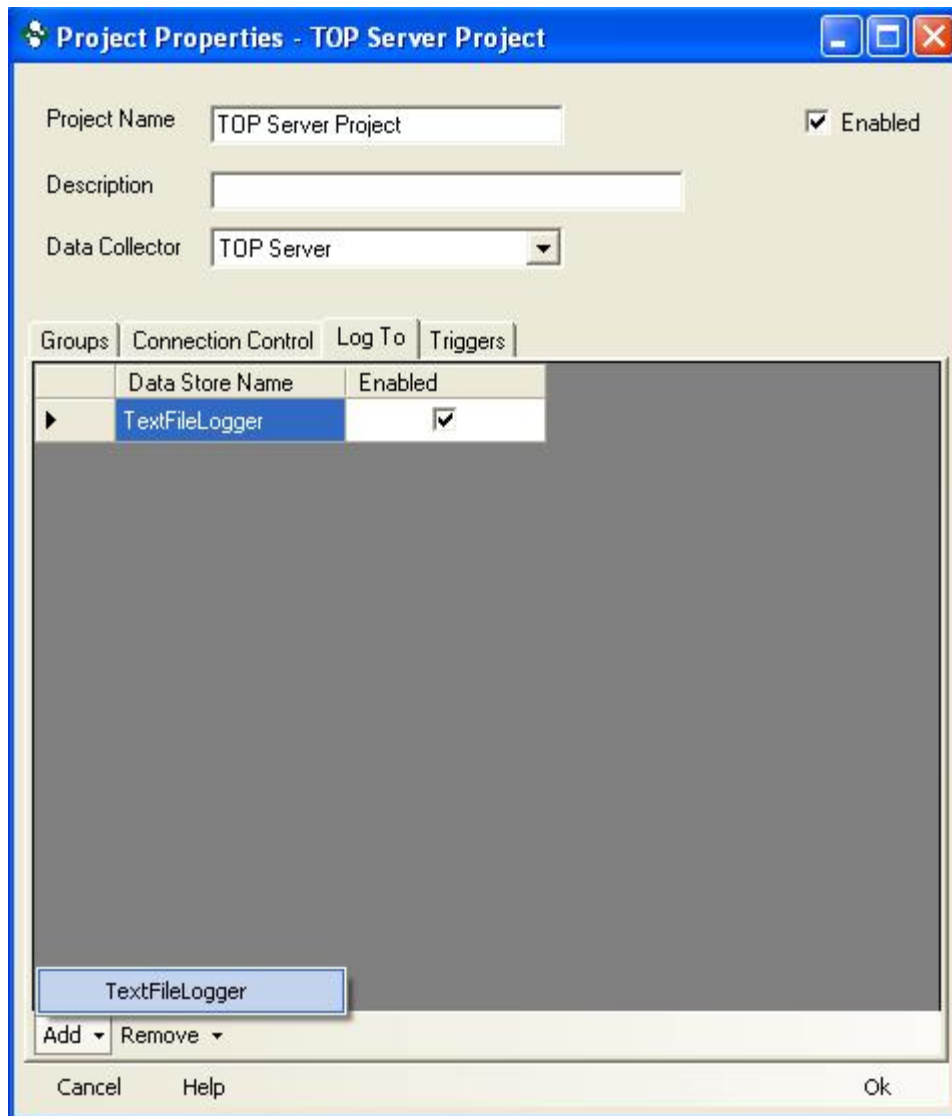
6. Add items to the group using your preferred method. Once you have all the items click the Read tab.



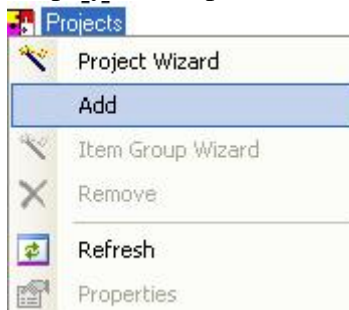
7. Select the method used to read the items and set the desired interval. Then click OK out of the Group Properties. The Project Properties page should still be open.



8. Click the Log To tab. At the bottom there is an Add button. Add the TextFileLogger to the project and enable it for logging. Click OK to close the Project Properties.



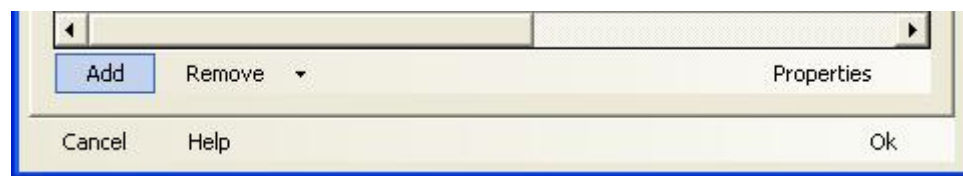
9. Now we need to add the second project. Right Click on the Project icon in the tree view and select Add. This will display the Properties for the new project.



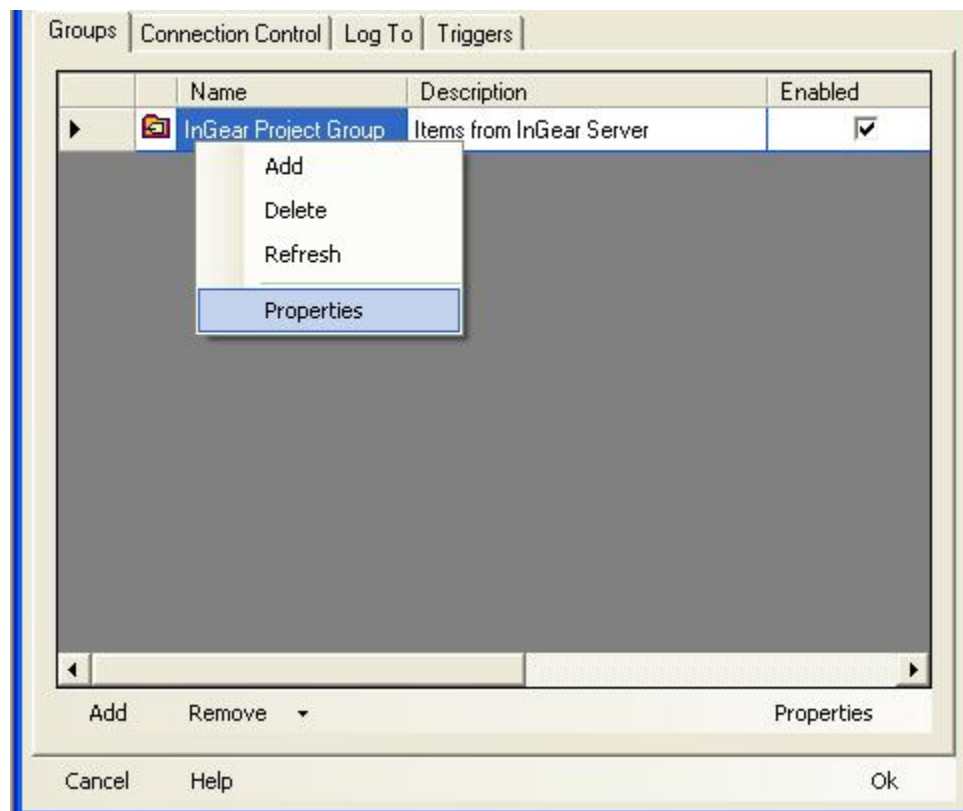
10. Give the project a meaningful name. Select the second Data Collector from the dropdown. For this example the Data Collector should be InGear AB Server.



11. Click the Add button in the bottom left. This will add an empty group to your project.



12. Right click on the group and select Properties.



13. Give your group a meaningful name. The items tab is where you can select the items that will be in the group.

Group Properties

Group Name: ☒ Enabled

Description:

14. Add items to the group using your preferred method. Once you have all the items click the Read tab.

Group Properties

Group Name: ☒ Enabled

Description:

Items | **Read** | Triggers

	Simple Name	ItemID	Description	Value	Quality
▶	1STO-RINGLIFT...	ami1.1STO-RINGLI...		0	0
	1STO-RINGLIFT...	ami1.1STO-RINGLI...		0	0
	24VDCPOWERS...	ami1.24VDCPOWE...		0	0
	2ndO-RINGLOA...	ami1.2ndO-RINGL...		0	0
	2NDO-RINGPR...	ami1.2NDO-RINGP...		0	0
	AutoCycle	ami1.AutoCycle		0	0
	AutoStop	ami1.AutoStop		0	0
	FIXTURENOTE...	ami1.FIXTUREENO...		0	0
	GUARDZONE	ami1.GUARDZONE		0	0
	LEFT1STO-RIN...	ami1.LEFT1STO-R...		0	0
	LEFT1STO-RIN...	ami1.LEFT1STO-R...		0	0

Add Remove Import Export Refresh Item Count: 103

Cancel Help Ok

15. Select the method used to read the items and set the desired interval. Then click OK out of the Group Properties. The Project Properties page should still be open.

Group Properties

Group Name: InGear Project Group ☒ Enabled

Description: Items from InGear Server

Items | **Read** | Triggers

Interval: 1000 msec

☒ Subscription Based Reads (recommended)

☐ Timer Based Reads

☐ Triggered Reads

Behavior:

☒ Synchronous ☐ Asynchronous

Cancel Help Ok

16. Click the Log To tab. At the bottom there is an Add button. Add the TextFileLogger to the project and enable it for logging. Click OK to close the Project Properties.

Project Properties - InGear Server Project

Project Name: InGear Server Project ☒ Enabled

Description:

Data Collector: InGear AB Server

Groups | Connection Control | Log To | Triggers

	Data Store Name	Enabled
▶	TextFileLogger	<input checked="" type="checkbox"/>

TextFileLogger

Add Remove

Cancel Help Ok