



Where Data will be logged

Understanding Where Data will be logged with the OPC Data Logger

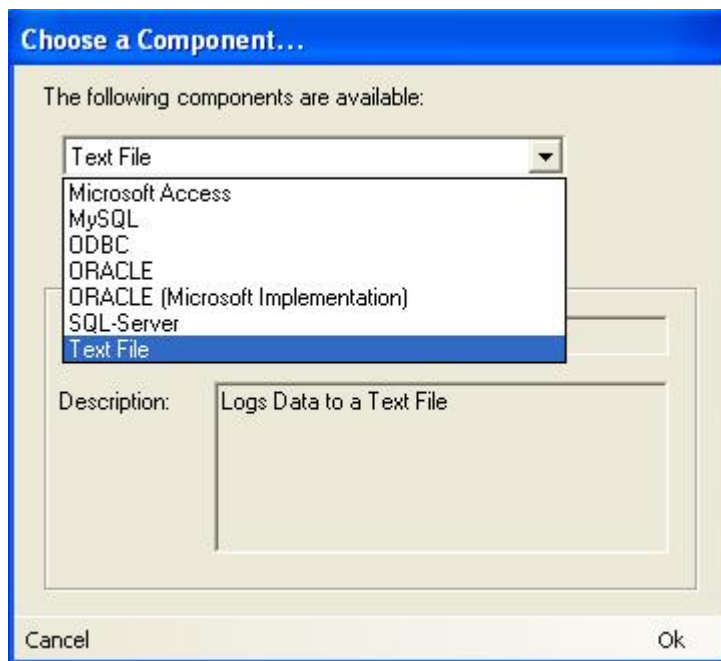


Where will Data be logged?

What determines where data will be logged? You will specify where to log data within the Data Storage section.

Choosing Where to Log Data

When adding a component for Data Storage you will be presented with the following options.

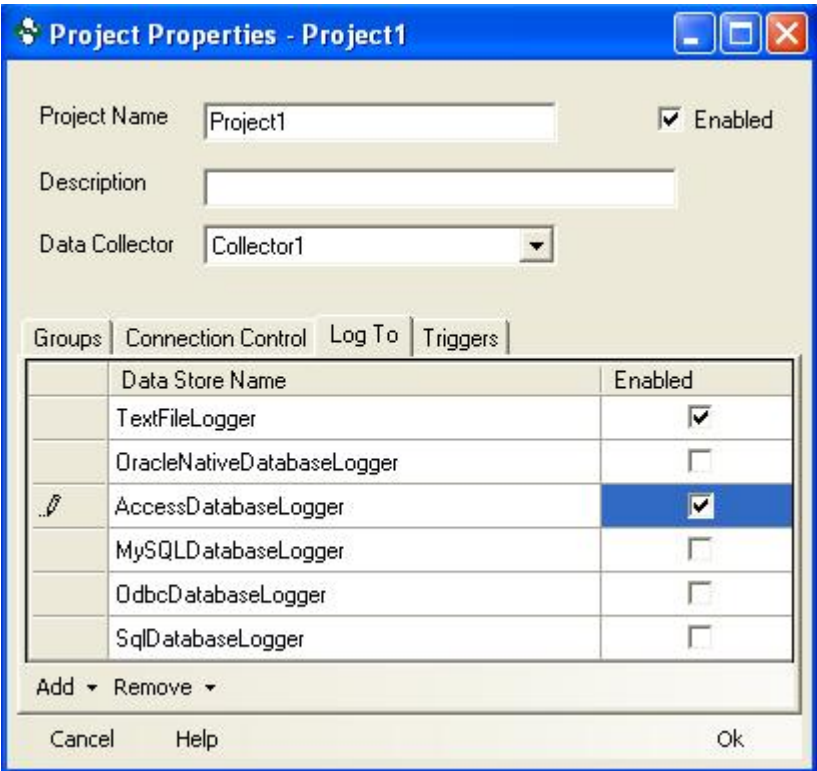


The Data Logger supports logging to Text files, Microsoft Access databases, MySQL databases, SQL Server databases, Oracle databases and ODBC databases. For more information about each Data Storage option please refer to the [Data Storage](#) section.



Enabling Data Storage Components

For any Data Storage component to be used it must be added to a Project and Enabled. Within the Project Properties page and the Log To tab you can add or remove Data Storage components. The Add button will let you choose from all Data Storage components you have configured. The Remove button will allow you to Remove Select or Remove All components. The Enabled checkbox next to each component signifies if the component will log data or not.



Data Store Name	Enabled
TextFileLogger	<input checked="" type="checkbox"/>
OracleNativeDatabaseLogger	<input type="checkbox"/>
AccessDatabaseLogger	<input checked="" type="checkbox"/>
MySQLDatabaseLogger	<input type="checkbox"/>
OdbcDatabaseLogger	<input type="checkbox"/>
SqlDatabaseLogger	<input type="checkbox"/>

In the example above if you were to start logging your project would log to a Text File and an Access Database since all other components are disabled.